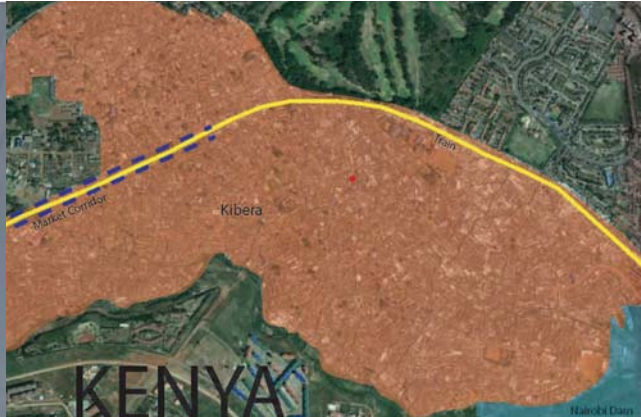


CITIES WITHIN CITIES

[Innovation Driven Architecture and Infrastructure]





BRIQUETTE



LOGS



RIVER



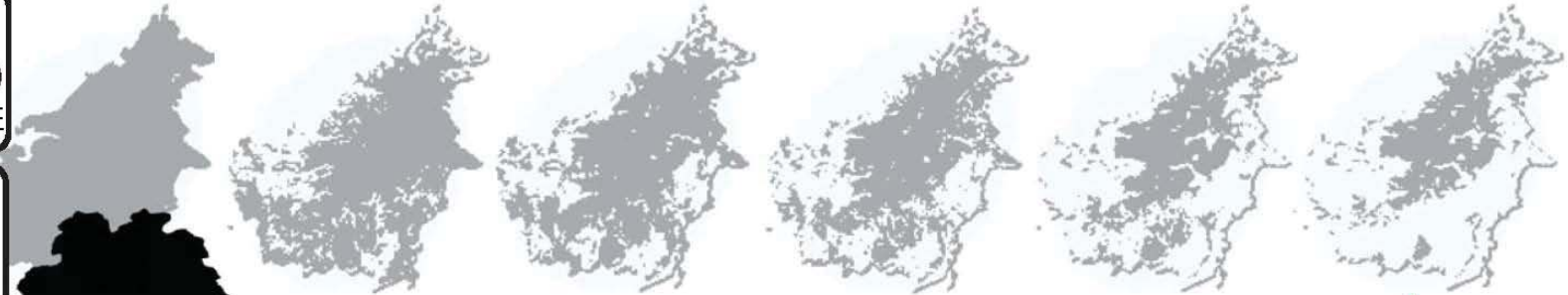
SAWMILL



WATER



NIGERIA



DURATION	TONS OF SAWDUST
YEAR	300,000
MONTH	25,000
WEEK	6,000

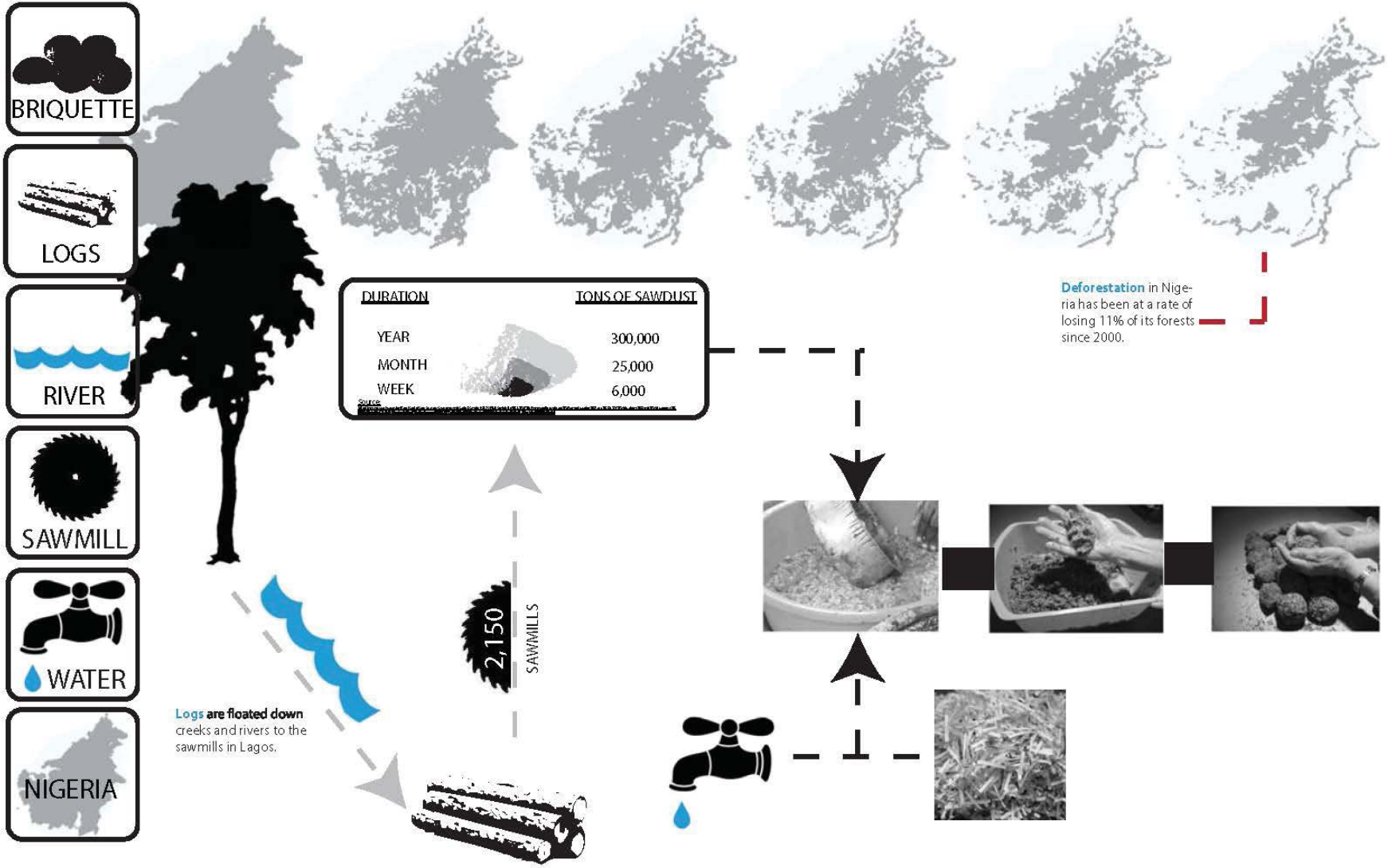
Source: www.forestwatch.org/press-releases/2012/05/01/deforestation-in-nigeria

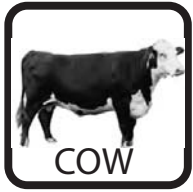
Deforestation in Nigeria has been at a rate of losing 11% of its forests since 2000.

Logs are floated down creeks and rivers to the sawmills in Lagos.



2,150
SAWMILLS





<u>DURATION</u>	<u>TONS</u>
YEAR	229,545
6 MONTH	38,257
MONTH	19,128

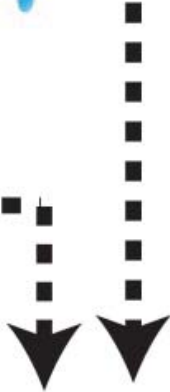


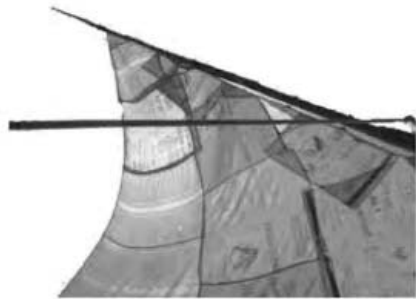
30 BARRELS / WK





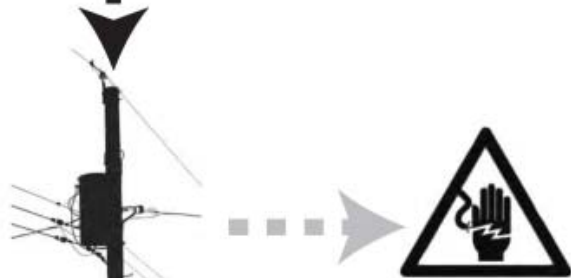
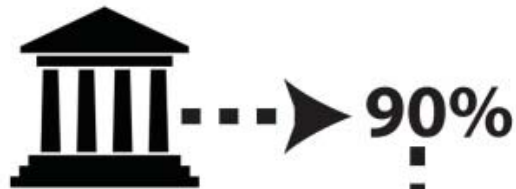
The annual rainfall in Nairobi is 900m(35inches) a year.





100,000 residence are projected to live in the informal settlement of Makoko. The majority of them are fisherman.

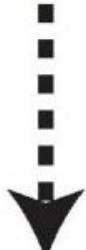




Nigeria can't keep its **lights** on: manufacturers, who account for only a 3-4% of GDP, complain that they must rely on costly diesel generators.



11 % BICYCLE





GENERATOR



PHONE



RIVER



SAWMILL

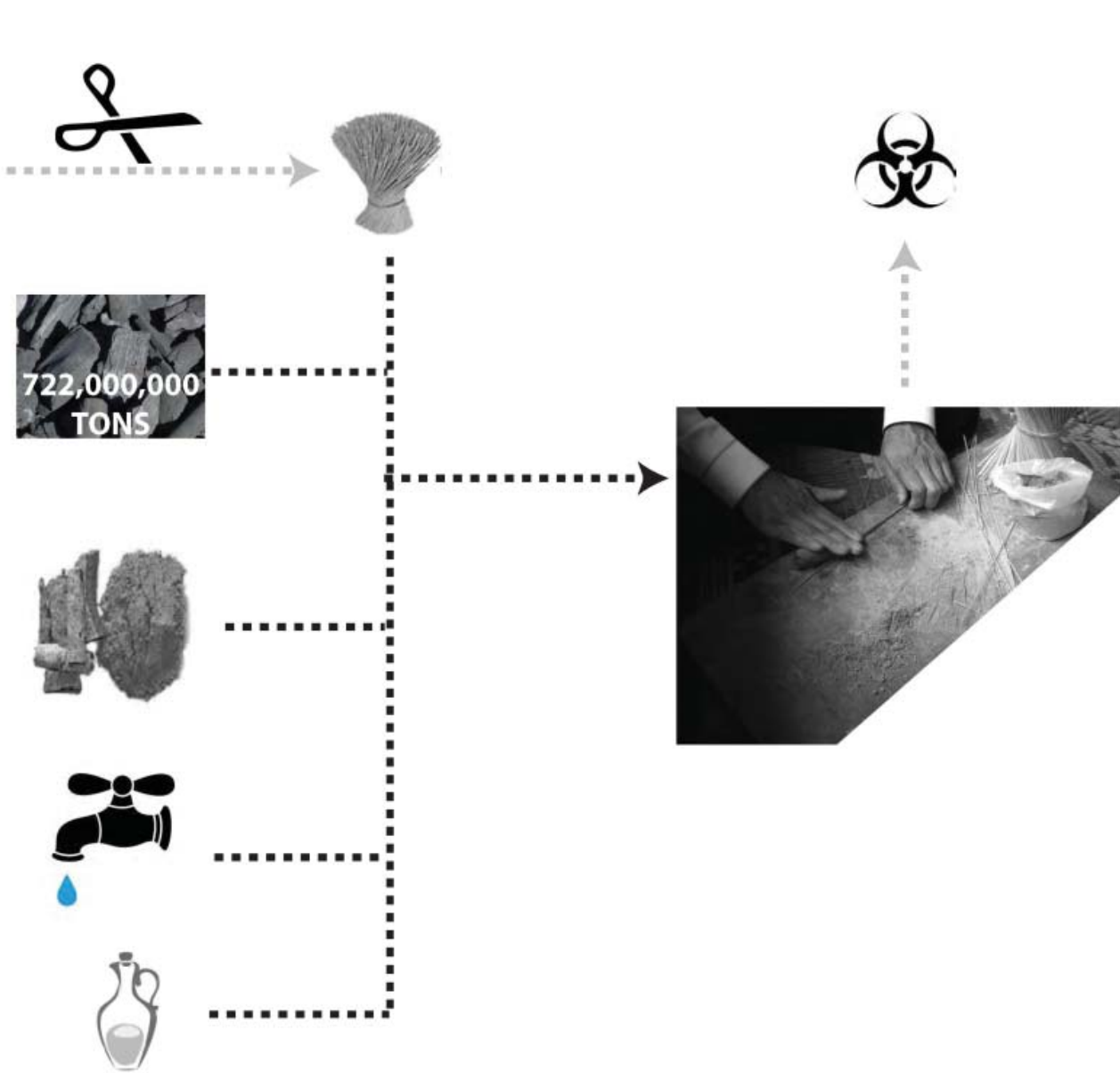
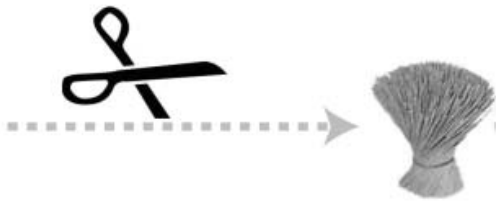


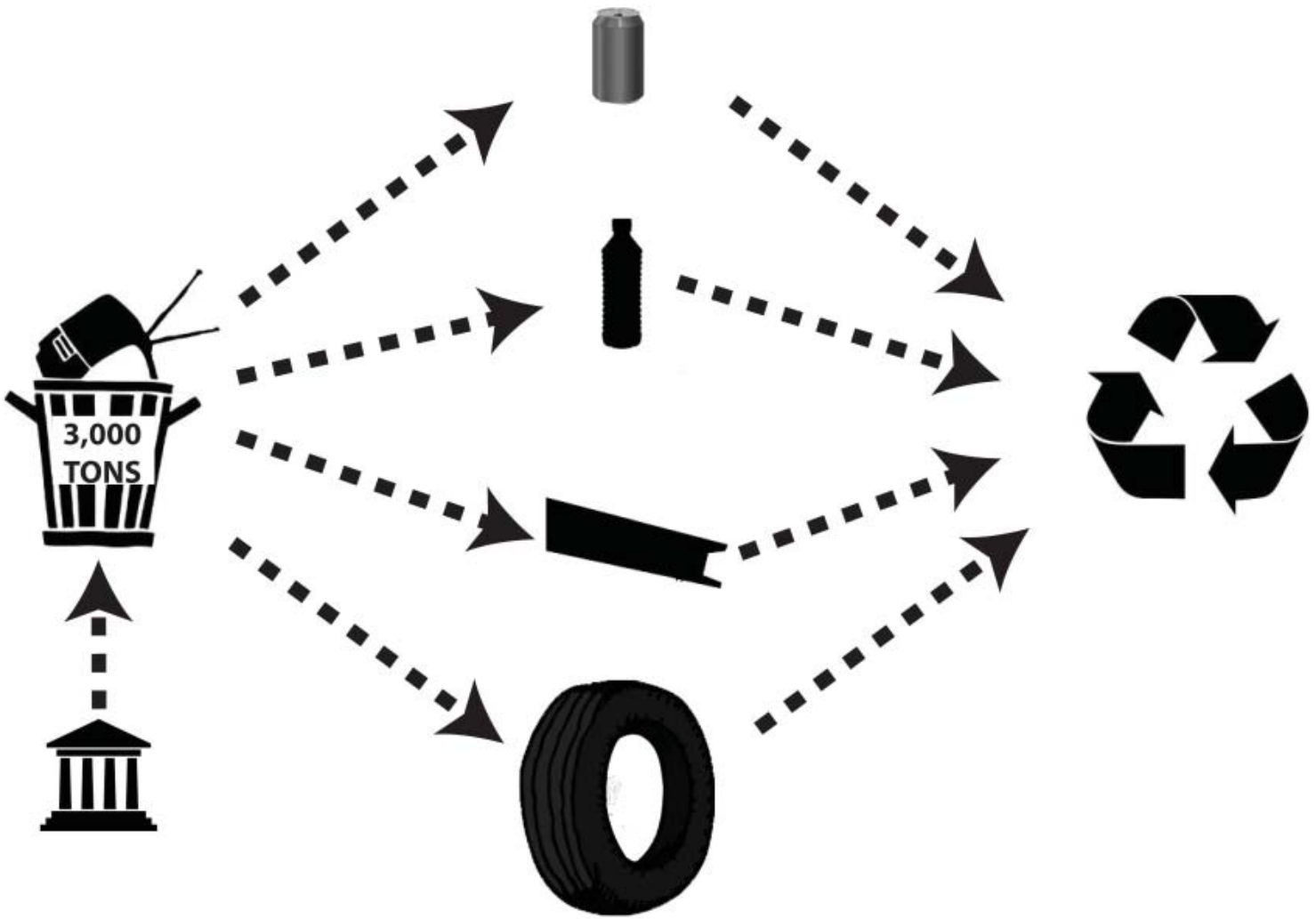
OIL

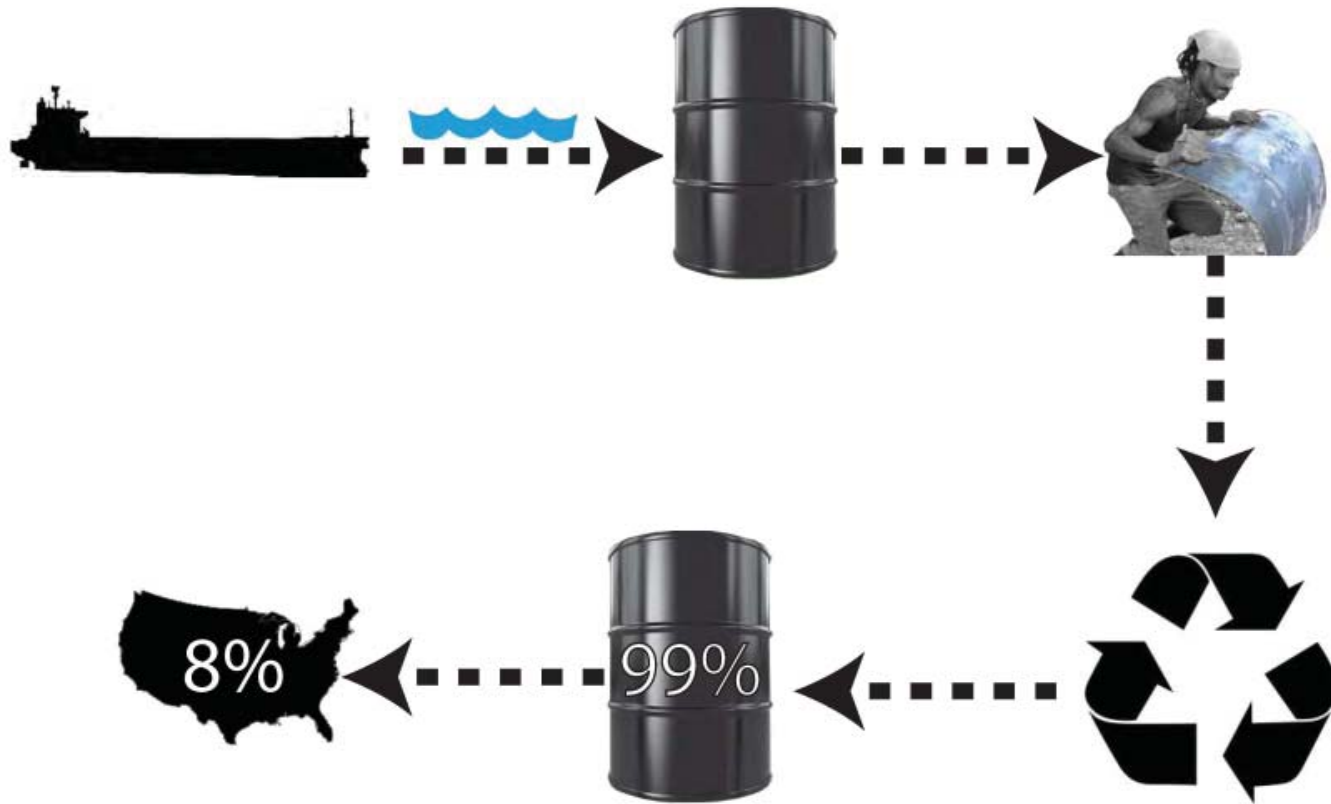


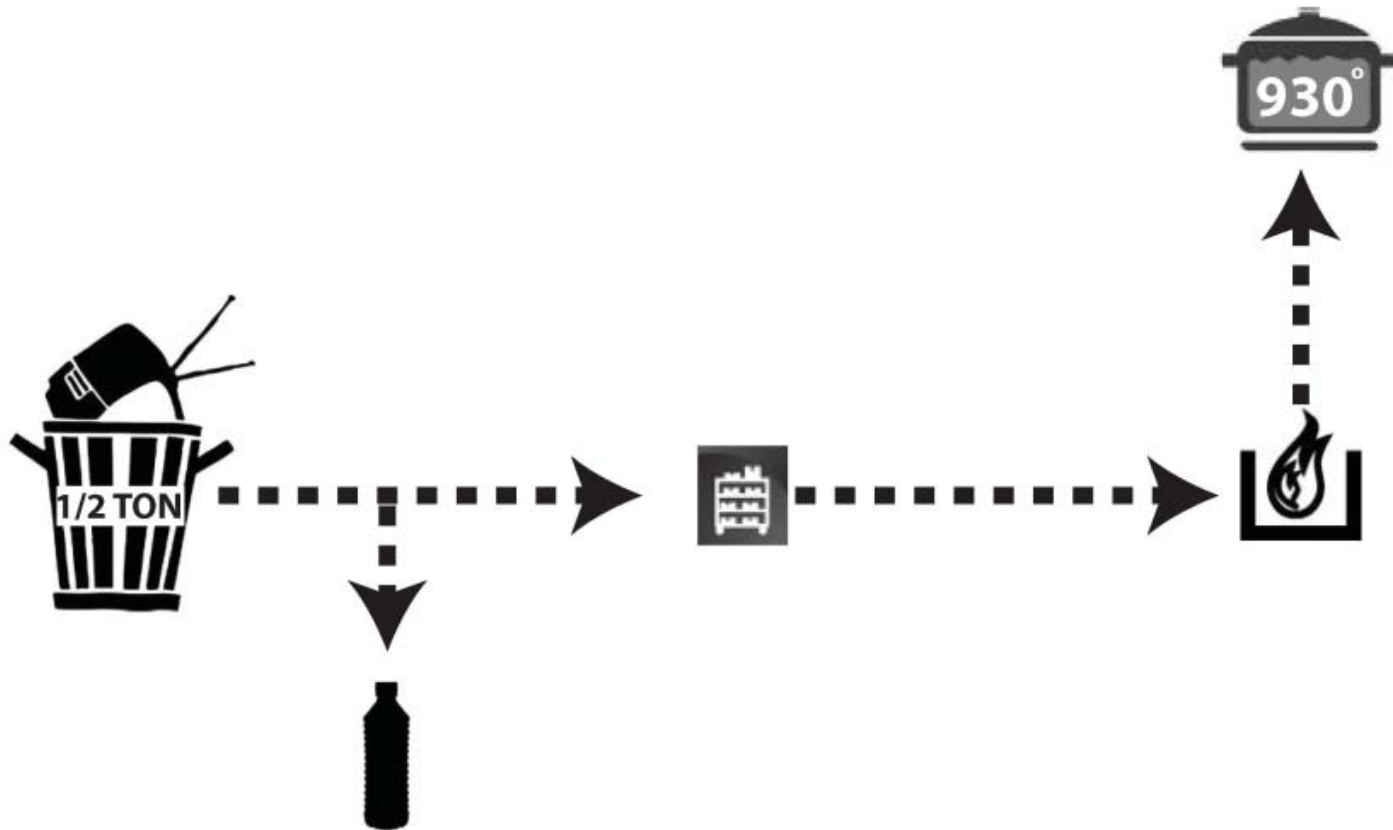
UGANDA

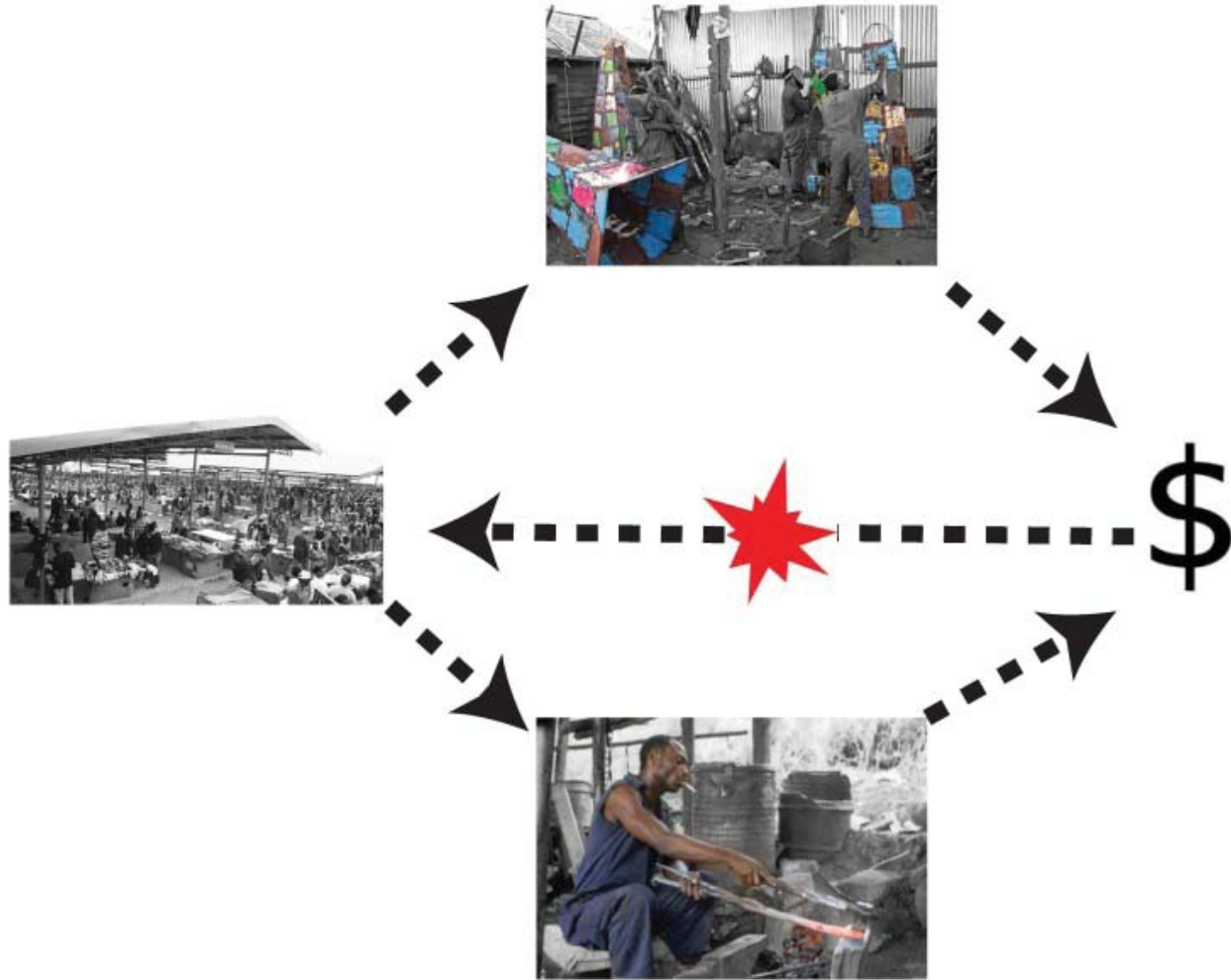




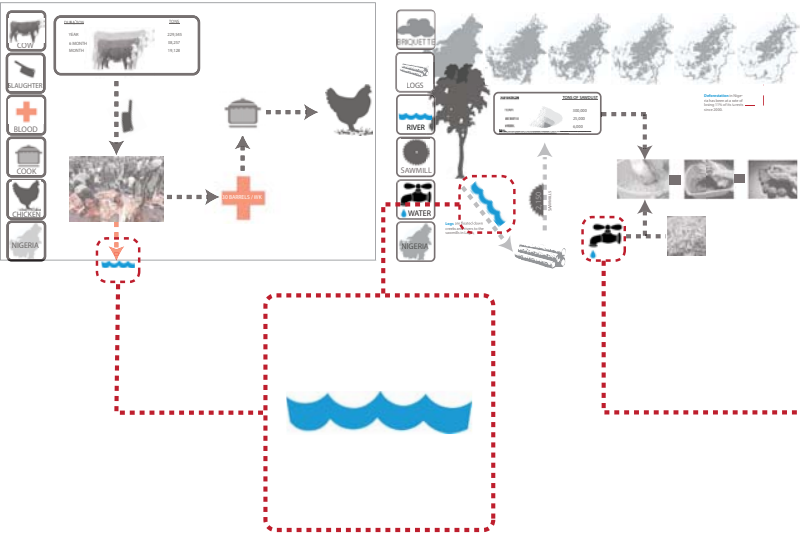




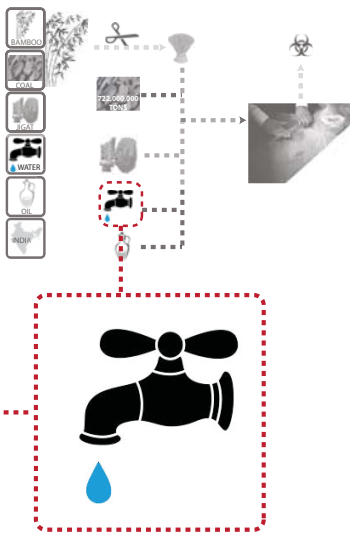




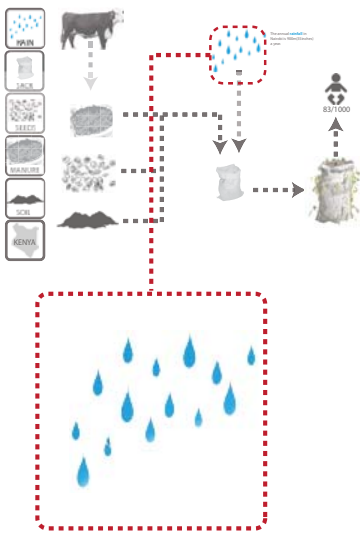
CONTAMINATION

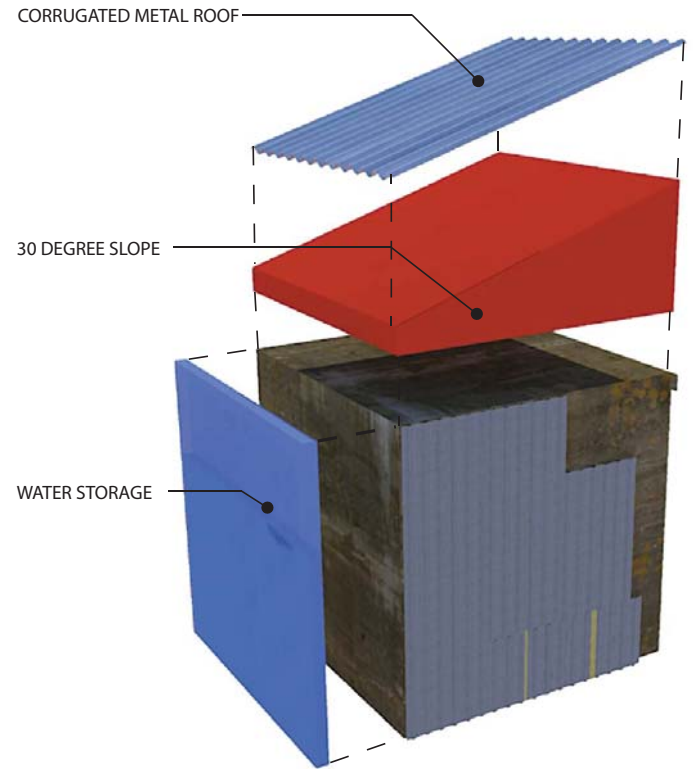


ACCESSIBILITY



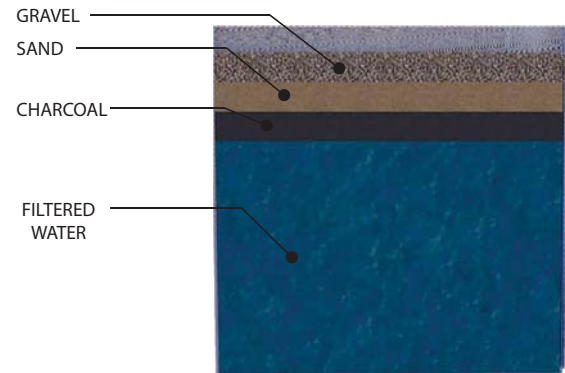
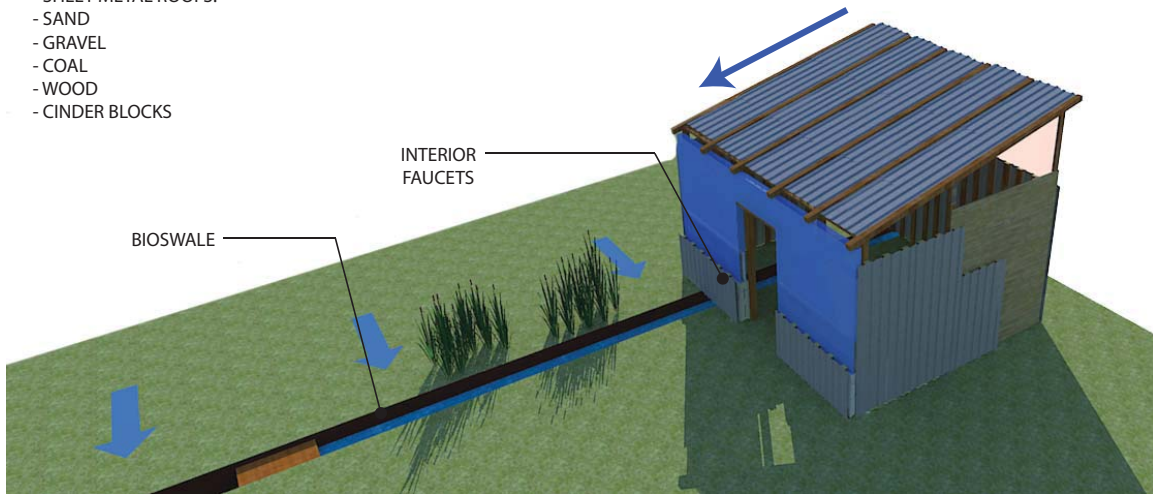
STORAGE



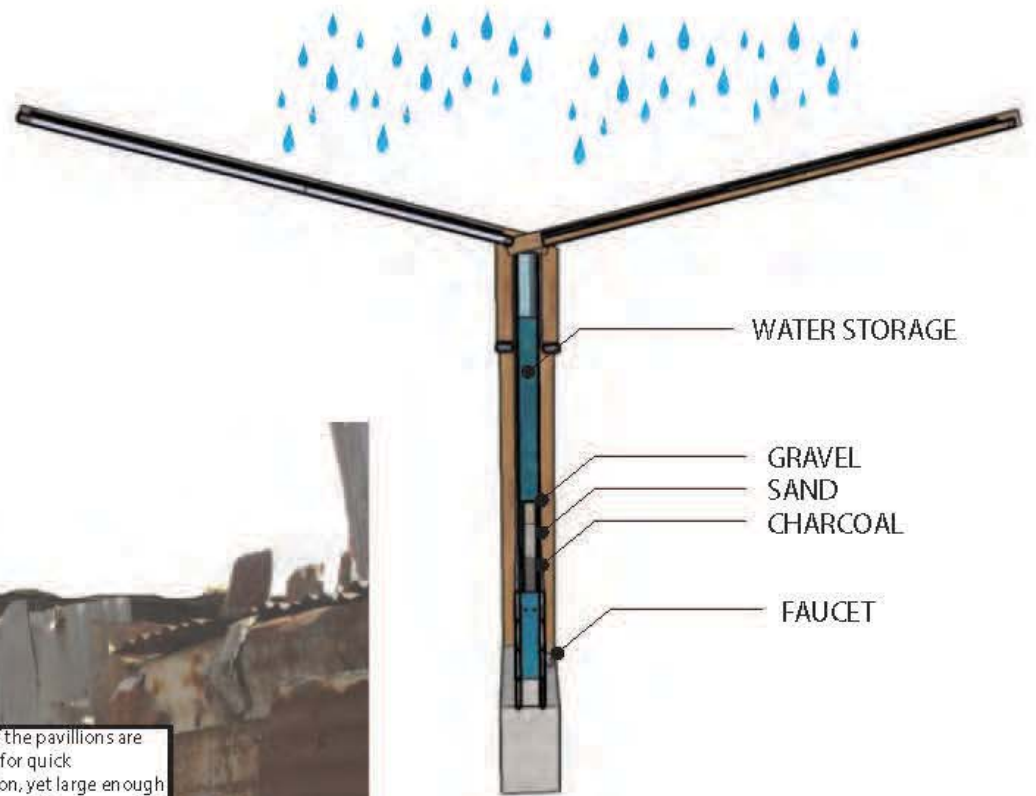


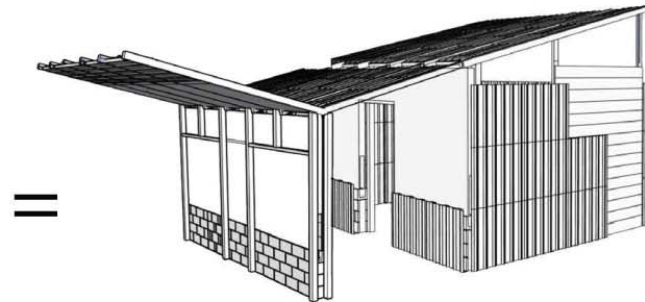
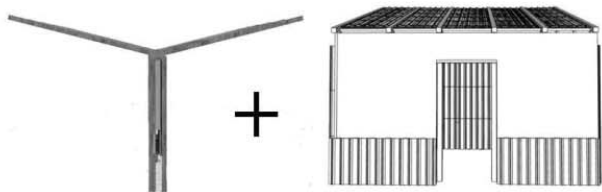
* MATERIALS ALL SELF OBTAINABLE.

- SHEET METAL ROOFS.
- SAND
- GRAVEL
- COAL
- WOOD
- CINDER BLOCKS

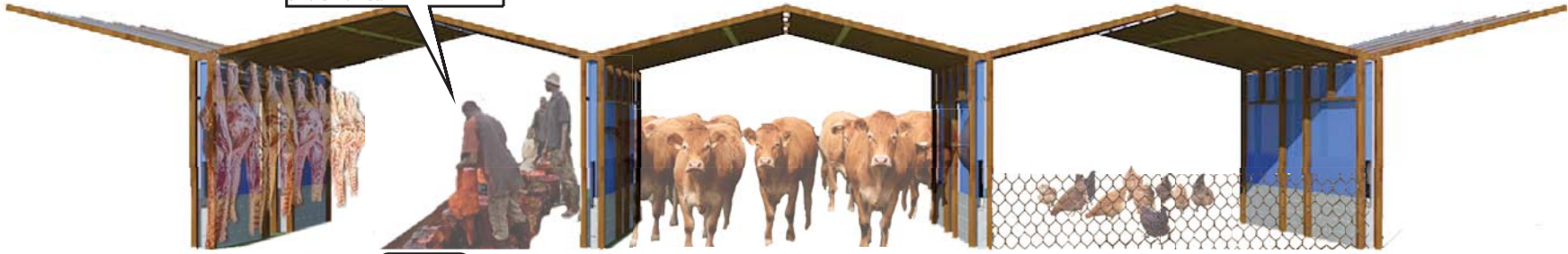


WATER WALL





The connection of multiple units allows for the ability of scale adjustments. Units can be on a scale of single family or a small market.



The concepts for the pavilion is based on the very process we observe in the daily lives of the people.



All my neighbors benefit off my rice company.

